



For certain patients with cancer of the stomach (gastric cancer) or cancer where the esophagus joins the stomach (gastroesophageal junction cancer)

Reimagine tomorrow with TEVIMBRA

A treatment that is designed to work with your immune system and help you live longer

- In a clinical study, people who received TEVIMBRA + chemotherapy and whose tumor tested positive for the biomarker PD-L1 lived longer than those who received placebo + chemotherapy

FDA-Approved Indication

TEVIMBRA is a prescription medicine used to treat adults with:

- cancer of the stomach (gastric cancer) or cancer where the esophagus joins the stomach (gastroesophageal junction cancer).
 - TEVIMBRA may be used in combination with chemotherapy that contains platinum and fluoropyrimidine as your first treatment when your gastric or gastroesophageal junction cancer:
 - ◆ cannot be removed with surgery or has spread to other parts of the body (metastatic), **and**
 - ◆ your tumor tests positive for “PD-L1.”

It is not known if TEVIMBRA is safe and effective in children.

Important Safety Information

TEVIMBRA is a medicine that may treat certain cancers by working with your immune system. TEVIMBRA can cause your immune system to attack normal organs and tissues in any area of your body and can affect the way they work. These problems can sometimes become severe or life-threatening and can lead to death. You can have more than one of these problems at the same time. These problems may happen anytime during treatment or even after your treatment has ended.

Please read the accompanying Medication Guide for TEVIMBRA and discuss it with your doctor. The physician Prescribing Information also is available.


TEVIMBRA[®]
(tislelizumab-jsgr)
Injection, for intravenous use 10 mg/mL



GET STARTED



Actor portrayal.

Table of contents



Click on the buttons below to learn more about a specific topic.

UNDERSTANDING TEVIMBRA AND GC/GEJC



4 [What are GC and GEJC?](#) >

5 [Understanding immunotherapy and TEVIMBRA](#) >

7 [Results with TEVIMBRA](#) >

GETTING STARTED ON TEVIMBRA



8 [Feeling prepared for infusions](#) >

9 [What to bring to infusions](#) >

10 [What to expect during infusions](#) >

TRACKING HOW YOU'RE FEELING



11 [Managing side effects](#) >

14 [Patient well-being](#) >

SUPPORT AND RESOURCES



15 [Cancer community resources](#) >

IMPORTANT SAFETY INFORMATION



16 [Important Safety Information](#) >

Please read the accompanying [Medication Guide](#) for TEVIMBRA and discuss it with your doctor. The physician [Prescribing Information](#) also is available.

Reimagining tomorrow starts today

If you have been diagnosed with GC or GEJC, or if you are caring for someone who has, you may feel eager to find out what the next steps are.

Now that your doctor has prescribed TEVIMBRA, the goal of this guide is to empower and prepare you for treatment.

In this guide, you will find useful information about:

- What GC and GEJC are
- What to expect with TEVIMBRA and how to prepare for treatment
- The importance of tracking how you feel
- Resources available to you



For caregivers: This guide includes recommendations on how to provide medical, practical, and emotional support for both your loved one and yourself throughout the treatment experience. Look for tips like this throughout the brochure.

Important Safety Information (cont'd)

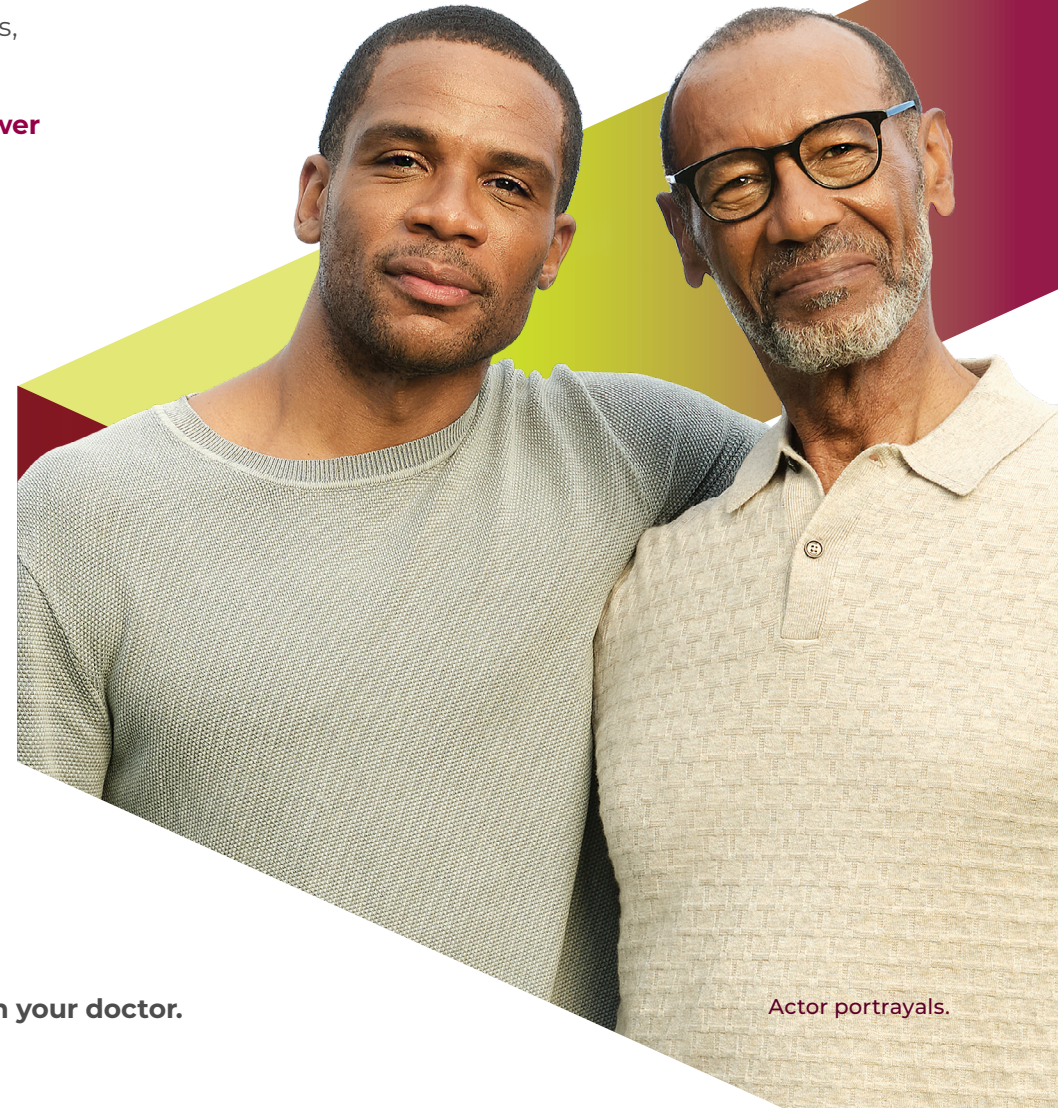
Call or see your healthcare provider right away for new or worsening symptoms, including:

Lung problems: New or worsening cough, shortness of breath, chest pain.

Intestinal problems: Diarrhea (loose stools) or more bowel movements than usual; stools that are black, tarry, sticky, or have blood or mucus; severe stomach-area (abdomen) pain or tenderness.

Please read the accompanying Medication Guide for TEVIMBRA and discuss it with your doctor. The physician Prescribing Information also is available.

TEVIMBRA[®]
(tislelizumab-jsgr)
Injection, for intravenous use 10 mg/mL



Actor portrayals.

What are GC and GEJC?

If you've been diagnosed with GC:

GC stands for gastric cancer. Gastric cancer is the scientific term for stomach cancer. It starts when normal cells in the stomach become cancerous and begin to grow and spread.

If you've been diagnosed with GEJC:

GEJC stands for gastroesophageal junction cancer. It is a cancer that affects the place where the esophagus* meets the stomach. It starts when normal cells in the gastroesophageal junction become cancerous and begin to grow and spread.

You are not alone.

In the United States, studies show that:

- More than 25,000 people are diagnosed with GC each year, according to the National Cancer Institute
- The number of patients with GEJC has more than doubled in the past 50 years

TEVIMBRA may be able to help you live longer.

Whether you have been diagnosed with GC or GEJC, TEVIMBRA may be able to help you. That's why you and your doctor have chosen this treatment. Continue reading this guide to learn more about your specific cancer type and about TEVIMBRA.

*The esophagus is the tube that carries food and liquid from the throat to the stomach.

Important Safety Information (cont'd)

Call or see your healthcare provider right away for new or worsening symptoms, including:

Liver problems: Yellowing of your skin or the whites of your eyes, severe nausea or vomiting, pain on the right side of your stomach area (abdomen), dark urine (tea colored), bleeding or bruising more easily than normal.

Please read the accompanying Medication Guide for TEVIMBRA and discuss it with your doctor. The physician Prescribing Information also is available.



Actor portrayals.

TEVIMBRA is a proven and effective type of infusion treatment known as immunotherapy

What is an infusion?

An infusion is the delivery of a treatment directly into your bloodstream through a vein. This is called an intravenous (IV) infusion.

It is a very common treatment method for people with various health challenges. You may receive your TEVIMBRA infusions at your doctor's office, an infusion center, or another healthcare location.



What is immunotherapy?

Immunotherapy is a type of treatment that is designed to work with your own immune system to find and destroy cancer cells. It helps boost your immune cells, such as T cells,* to attack growing cancer cells. It is a different type of treatment than chemotherapy, which can rapidly target growing cells in the body.

Often, immunotherapy and chemotherapy treatments can be partnered together to give your body the extra help it needs.



*T cells, or T lymphocytes, are a type of white blood cell.

Important Safety Information (cont'd)

Call or see your healthcare provider right away for new or worsening symptoms, including:

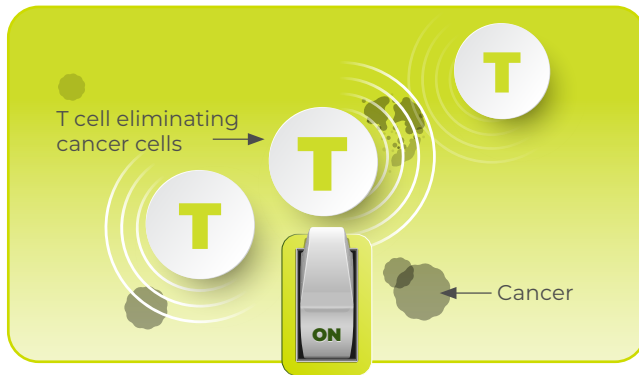
Hormone gland problems: Headaches that will not go away or unusual headaches; eye sensitivity to light; eye problems; rapid heartbeat; increased sweating; extreme tiredness; weight gain or weight loss; feeling more hungry or thirsty than usual; urinating more often than usual; hair loss; feeling cold; constipation; your voice gets deeper; dizziness or fainting; changes in mood or behavior, such as decreased sex drive, irritability, or forgetfulness.

Please read the accompanying Medication Guide for TEVIMBRA and discuss it with your doctor. The physician Prescribing Information also is available.

TEVIMBRA is designed to work with T cells in your immune system

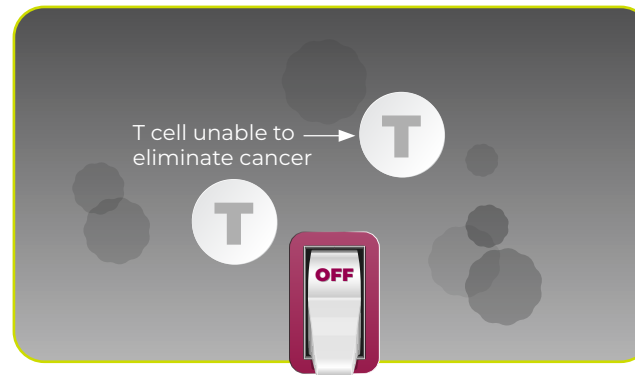
In a healthy immune system, T cells are “switched on.”

The T cells are active, traveling through your body, looking for and eliminating disease and infection.



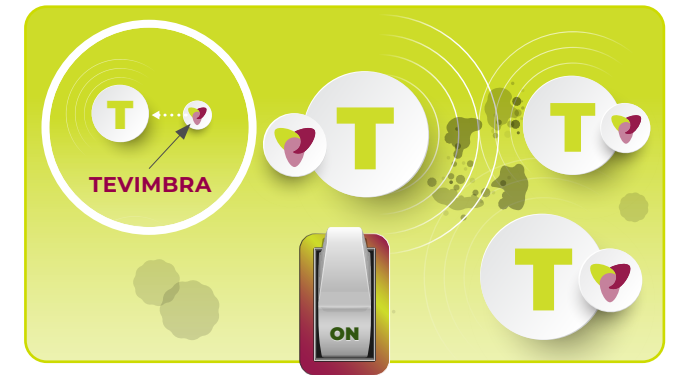
In the immune system of someone with cancer, many T cells are “switched off.”

Cancer can “flip a switch” to turn off T cells, preventing them from finding and eliminating the cancer cells.



In the immune system of someone receiving TEVIMBRA treatment, T cells are “switched back on” to fight cancer.

TEVIMBRA attaches to T cells, keeping the “switch” on, so T cells can find and eliminate the cancer cells.



TEVIMBRA has been shown to work in people who have tested positive for the PD-L1 biomarker.

Levels of PD-L1 vary from person to person. If you are receiving TEVIMBRA, your doctor likely has found that certain cells in your tumor show PD-L1.

Important Safety Information (cont'd)

Call or see your healthcare provider right away for new or worsening symptoms, including:

Kidney problems: Decrease in your amount of urine, blood in your urine, swelling in your ankles, loss of appetite.

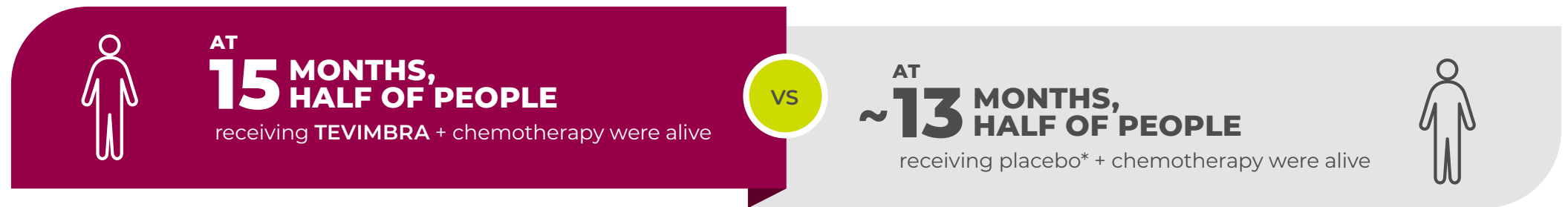
Please read the accompanying Medication Guide for TEVIMBRA and discuss it with your doctor. The physician Prescribing Information also is available.

TEVIMBRA can help people with GC/GEJC respond to treatment and live longer

TEVIMBRA + chemotherapy was studied in a clinical trial of nearly 1,000 people who had GC or GEJC. Those included in the trial:

- Had cancer that had spread
- Could not have their cancer removed with surgery
- Had not received treatment for this stage of their cancer

With TEVIMBRA + chemotherapy, people typically lived longer:



With TEVIMBRA + chemotherapy, more people saw their tumor shrink:

~5 out of 10 people saw their tumor shrink with TEVIMBRA + chemotherapy vs ~4 out of 10 people with placebo + chemotherapy.

At 3 years with TEVIMBRA + chemotherapy:
More people were still alive than those who received placebo + chemotherapy (21% vs 13% of patients).

*Placebo is an inactive treatment used to compare with active treatments.

Important Safety Information (cont'd)

Call or see your healthcare provider right away for new or worsening symptoms, including:

Skin problems: Rash; itching; skin blistering or peeling; painful sores or ulcers in your mouth or in your nose, throat, or genital area; fever or flu-like symptoms; swollen lymph nodes.

Please read the accompanying [Medication Guide](#) for TEVIMBRA and discuss it with your doctor. The physician [Prescribing Information](#) also is available.

Feel prepared before your first infusion with TEVIMBRA

Taking a few steps before your infusion appointment can help you feel ready for treatment to begin.

Step 1

Confirm your appointment with your healthcare provider. Be sure to notify your healthcare provider if you are starting any new medications, supplements, or herbs and inform them of any upcoming surgical procedures or biopsies.

Step 2

Ask your healthcare provider any questions you may have, such as:

- Is there anything I need to prepare for the appointment?
- Are there any foods or drinks that I should avoid?
- Should I take my medications in the morning before treatment?
- Can I bring a friend or family member to the appointment with me?
- How long should I expect to be here for the infusion?
- What are the common side effects of the treatment, so I can know what to expect?
- Whom should I call if I have side effects?
- Are there any precautions I should take after my treatment?
- Will I be able to drive myself to future appointments?
- What will my treatment schedule look like with TEVIMBRA and chemotherapy?

Step 3

Make sure to arrive early for your first appointment to allow time for paperwork if this is your first time receiving IV treatment. Be sure to wear comfortable clothes with sleeves you can roll up past your elbows so that the IV line can be placed easily.



For caregivers: You can help your loved one prepare for infusion by:

- **Offering to provide or schedule transportation** to and from the infusion center
- **Coordinating with the healthcare team** to keep up to date with the treatment schedule
- **Keeping a notebook** for recording information about treatment, symptoms, and medications

Please read the accompanying [Medication Guide](#) for TEVIMBRA and discuss it with your doctor. The physician [Prescribing Information](#) also is available.

What to bring to your infusion appointment

Being comfortable during your infusion appointment is important. Here is a list of suggested personal and practical items that may be beneficial to bring:

- ✓ An insurance card and any necessary paperwork, such as a list of current medications
- ✓ A sweater, in case the infusion center is chilly
- ✓ A comfortable pillow and blanket
- ✓ Books or a tablet to help pass the time
- ✓ Headphones or earplugs
- ✓ Healthy snacks or drinks

Be sure to ask your healthcare team for more suggestions or if you have any questions about what items you are allowed to bring with you.

Please read the accompanying [Medication Guide](#) for TEVIMBRA and discuss it with your doctor. The physician [Prescribing Information](#) also is available.

Actor portrayal.

What to expect during your infusions with TEVIMBRA

Your first TEVIMBRA infusion

- **You will be brought to a comfortable chair in an infusion room.**
A healthcare professional will set up your IV and start your infusion
- **Your infusion will last approximately 60 minutes.** The healthcare professionals will continue to check on you to make sure you're feeling okay and are still comfortable. During this time you can read a book, listen to music or a podcast, or simply relax
- **Make sure to tell the staff if you experience any discomfort** during the infusion so they can offer help and monitor your needs
- **When your first infusion ends, you may need to stay in the office** for observation with your healthcare team. This helps ensure that you are tolerating the treatment well

Be sure to talk to your doctor about your personalized treatment schedule. Your treatment duration may vary, depending on the chemotherapy treatment your doctor has decided is best for you.

Important Safety Information (cont'd)

Call or see your healthcare provider right away for new or worsening symptoms, including:

Problems can also happen in other organs and tissues. These are not all of the signs and symptoms of immune system problems that can happen with TEVIMBRA. Call or see your healthcare provider right away for new or worsening symptoms, which may include: chest pain, irregular heartbeat, shortness of breath, swelling of ankles; confusion, sleepiness, memory problems, changes in mood or behavior, stiff neck, balance problems, tingling or numbness of the arms or legs; double vision, blurry vision, sensitivity to light, eye pain, changes in eyesight; persistent or severe muscle pain or weakness, muscle cramps; low red blood cells, bruising.

Please read the accompanying [Medication Guide](#) for TEVIMBRA and discuss it with your doctor. The physician [Prescribing Information](#) also is available.

Your next TEVIMBRA infusions

- **For most people receiving TEVIMBRA treatment, the next infusions will follow a consistent routine,** based on your doctor's instructions
- **You will keep receiving TEVIMBRA as long as it works for you** and you are able to tolerate the treatments without any challenging side effects
- **Your healthcare provider will work with you** to decide how long you should continue
- **Continue to monitor how you feel.** Tell the staff if you experience any discomfort or change in feeling during the infusion. The staff is there to offer help and monitor your needs



For caregivers: Infusion sessions with TEVIMBRA are not long, but support and companionship go a long way during the sessions. If your schedule allows, consider keeping your loved one company while they receive their infusion.

Tracking how you're feeling can help catch any side effects you may be experiencing

You know your body best.

To help track any side effects and minimize the chance that you will need to pause treatment, pay attention to how you are feeling.

Be sure to:

- Communicate any side effects to your healthcare provider
- Track any side effects you experience by writing them down in a treatment journal
- Talk to your friends and family
- Reach out to support groups



For caregivers: Your well-being matters too. Here are ways to maintain it during the treatment experience:

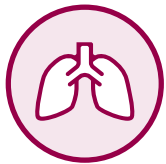
- Join a caregiver support group for guidance and to share your experiences
- Delegate tasks when feeling overwhelmed
- Prioritize healthy habits (eg, balanced diet, hydration, sleep, attending your own appointments)
- Enjoy activities and time with people you love
- Celebrate every success and embrace time with your loved one

Please read the accompanying [Medication Guide](#) for TEVIMBRA and discuss it with your doctor. The physician [Prescribing Information](#) also is available.



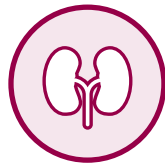
Actor portrayal.

If you notice any of the following symptoms, call or see your healthcare provider right away



Lung problems

- New or worsening cough
- Shortness of breath
- Chest pain



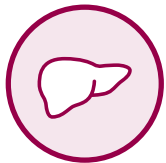
Kidney problems

- Decrease in your amount of urine
- Blood in your urine
- Swelling of your ankles
- Loss of appetite



Intestinal problems

- Diarrhea (loose stools) or more bowel movements than usual
- Stools that are black, tarry, sticky, or have blood or mucus
- Severe stomach area (abdomen) pain or tenderness



Liver problems

- Yellowing of your skin or the whites of your eyes
- Severe nausea or vomiting
- Pain on the right side of your stomach area (abdomen)
- Dark urine (tea colored)
- Bleeding or bruising more easily than normal



Skin problems

- Rash
- Itching
- Skin blistering or peeling
- Painful sores or ulcers in your mouth or in your nose, throat, or genital area
- Fever or flu-like symptoms
- Swollen lymph nodes



Hormone gland problems

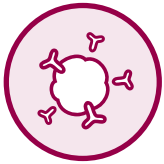
- Headaches that will not go away or unusual headaches
- Eye sensitivity to light
- Eye problems
- Rapid heartbeat
- Increased sweating
- Extreme tiredness
- Weight gain or weight loss
- Feeling more hungry or thirsty than usual
- Urinating more often than usual
- Hair loss
- Feeling cold
- Constipation
- Your voice gets deeper
- Dizziness or fainting
- Changes in mood or behavior, such as decreased sex drive, irritability, or forgetfulness



For caregivers: You can help observe and take note of any side effects your loved one may be experiencing. Encourage them to be honest about their symptoms. Proactively talk with your loved one's healthcare team about any potential side effects.

Please read the accompanying [Medication Guide](#) for TEVIMBRA and discuss it with your doctor. The physician [Prescribing Information](#) also is available.

If you notice any of the following symptoms, call or see your healthcare provider right away (cont'd)



Immune system problems in other organs

- Chest pain, irregular heartbeat, shortness of breath, swelling of ankles
- Confusion, sleepiness, memory problems, changes in mood or behavior, stiff neck, balance problems, tingling or numbness of the arms or legs
- Double vision, blurry vision, sensitivity to light, eye pain, changes in eyesight
- Persistent or severe muscle pain or weakness, muscle cramps
- Low red blood cells, bruising



Reactions during or shortly after the infusion that can sometimes be severe or life-threatening:

- Chills or shaking
- Itching or rash
- Flushing
- Shortness of breath or wheezing
- Dizziness
- Feeling like passing out
- Fever
- Back or neck pain



Your healthcare provider can help you manage these side effects and get you back on track with TEVIMBRA.

Important Safety Information (cont'd)

Call or see your healthcare provider right away for new or worsening symptoms, including:

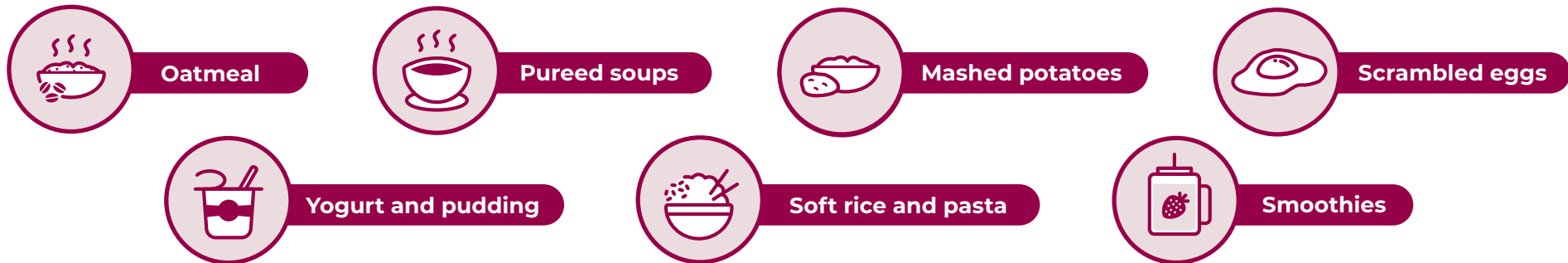
Infusion reactions that can sometimes be severe or life-threatening. Signs or symptoms of infusion reactions may include: Chills or shaking, itching or rash, flushing, shortness of breath or wheezing, dizziness, feeling like passing out, fever, back or neck pain.

Rejection of a transplanted organ or tissue. Your healthcare provider should tell you what signs and symptoms you should report and monitor you, depending on the type of organ transplant that you have had.

Please read the accompanying Medication Guide for TEVIMBRA and discuss it with your doctor. The physician Prescribing Information also is available.

Beyond your treatment with TEVIMBRA, there are additional ways to support your health and comfort

GC and GEJC often impact the ability to swallow or digest food. This can make eating very challenging and can lead to significant weight loss. Therefore, it is important that you have access to foods that are soft, moist, and easy to swallow, such as:



For caregivers: To ensure that your loved one is consuming the nutrients they need, try preparing snacks and meals like the ones above.

Some people with GC or GEJC may require a feeding tube. Feeding tubes can be very helpful for those having difficulty swallowing, eating, and drinking. If a feeding tube is needed, it is placed in the stomach or the small intestine. It can be used for liquid forms of food or medicine. Your healthcare team will teach you and your caregivers how to care for and clean the equipment. If you have any questions, be sure to ask your healthcare team.

Important Safety Information (cont'd)

Call or see your healthcare provider right away for new or worsening symptoms, including:

Complications, including graft-versus-host-disease (GVHD), in people who have received a bone marrow (stem cell) transplant that uses donor stem cells (allogeneic). These complications can be serious and can lead to death. These complications may happen if you underwent transplantation either before or after being treated with TEVIMBRA. Your healthcare provider will monitor you for these complications.

Please read the accompanying [Medication Guide](#) for TEVIMBRA and discuss it with your doctor. The physician [Prescribing Information](#) also is available.

Cancer community resources available to you



You and your caregivers are not alone. Organizations are here to help.

Visit the websites below for transportation, education, counseling services, and more:



Hope For Stomach Cancer is a 501(c)(3) nonprofit organization that provides resources to patients, caregivers, and loved ones while promoting early detection and prevention to the general and medical communities. Hope creates and facilitates programs that enable those affected by stomach cancer to take actionable steps to live the best possible life through each phase of the disease. Their vision is to bridge the gap between research and patient care.

stocan.org



The Gastric Cancer Foundation is a national nonprofit organization dedicated to improving the lives of people affected by gastric (stomach) cancer and working with leading researchers to find a cure. The foundation website offers a comprehensive range of resources for those impacted by the disease. Online offerings include a confidential clinical trial finder, a secure community forum, and a video series with nutritional tips and recipes tailored to the unique needs of this population, among other valuable tools.

gastriccancer.org



CancerCare is the leading national organization providing free professional support services and information to help manage the emotional, practical, and financial challenges of cancer. Resources include counseling, educational workshops, and copayment assistance provided by prepared social workers and world-leading cancer experts.

cancercare.org
800-813-4673



CSC is a global nonprofit network with 190 locations, including CSC and Gilda's Club centers as well as healthcare partnerships. These locations, along with a toll-free helpline, digital services, and award-winning education materials, provide \$50 million in free support services to patients and families each year.

cancersupportcommunity.org
888-793-9355



The American Cancer Society (ACS) is a nationwide, community-based volunteer health organization that aims to eliminate cancer as a major health problem. ACS provides information and support, such as transportation and lodging, to people in every community who have been touched by cancer.

cancer.org
800-227-2345

Please read the accompanying [Medication Guide](#) for TEVIMBRA and discuss it with your doctor. The physician [Prescribing Information](#) also is available.

Important Safety Information



TEVIMBRA is a medicine that may treat certain cancers by working with your immune system. TEVIMBRA can cause your immune system to attack normal organs and tissues in any area of your body and can affect the way they work. These problems can sometimes become severe or life-threatening and can lead to death. You can have more than one of these problems at the same time. These problems may happen anytime during treatment or even after your treatment has ended.

Call or see your healthcare provider right away for new or worsening symptoms, including:

Lung problems: New or worsening cough, shortness of breath, chest pain.

Intestinal problems: Diarrhea (loose stools) or more bowel movements than usual; stools that are black, tarry, sticky, or have blood or mucus; severe stomach-area (abdomen) pain or tenderness.

Liver problems: Yellowing of your skin or the whites of your eyes, severe nausea or vomiting, pain on the right side of your stomach area (abdomen), dark urine (tea colored), bleeding or bruising more easily than normal.

Hormone gland problems: Headaches that will not go away or unusual headaches; eye sensitivity to light; eye problems; rapid heartbeat; increased sweating; extreme tiredness; weight gain or weight loss; feeling more hungry or thirsty than usual; urinating more often than usual; hair loss; feeling cold; constipation; your voice gets deeper; dizziness or fainting; changes in mood or behavior, such as decreased sex drive, irritability, or forgetfulness.

Kidney problems: Decrease in your amount of urine, blood in your urine, swelling in your ankles, loss of appetite.

Skin problems: Rash; itching; skin blistering or peeling; painful sores or ulcers in your mouth or in your nose, throat, or genital area; fever or flu-like symptoms; swollen lymph nodes.

Problems can also happen in other organs and tissues. These are not all of the signs and symptoms of immune system problems that can happen with TEVIMBRA. Call or see your healthcare provider right away for new or worsening symptoms, which may include: chest pain, irregular heartbeat, shortness of breath, swelling of ankles; confusion, sleepiness, memory problems, changes in mood or behavior, stiff neck, balance problems, tingling or numbness of the arms or legs; double vision, blurry vision, sensitivity to light, eye pain, changes in eyesight; persistent or severe muscle pain or weakness, muscle cramps; low red blood cells, bruising.

Infusion reactions that can sometimes be severe or life-threatening. Signs or symptoms of infusion reactions may include: Chills or shaking, itching or rash, flushing, shortness of breath or wheezing, dizziness, feeling like passing out, fever, back or neck pain.

Please read the accompanying [Medication Guide](#) for TEVIMBRA and discuss it with your doctor. The physician [Prescribing Information](#) also is available.

Important Safety Information (cont'd)



Rejection of a transplanted organ or tissue. Your healthcare provider should tell you what signs and symptoms you should report and monitor you, depending on the type of organ transplant that you have had.

Complications, including graft-versus-host-disease (GVHD), in people who have received a bone marrow (stem cell) transplant that uses donor stem cells (allogeneic). These complications can be serious and can lead to death. These complications may happen if you underwent transplantation either before or after being treated with TEVIMBRA. Your healthcare provider will monitor you for these complications.

Getting medical treatment right away may help keep these problems from becoming more serious. Your healthcare provider will check you for these problems during your treatment with TEVIMBRA. Your healthcare provider may treat you with corticosteroid or hormone replacement medicines. Your healthcare provider may also need to delay or completely stop treatment with TEVIMBRA if you have severe side effects.

Before receiving TEVIMBRA, tell your healthcare provider about all of your medical conditions, including if you:

- have immune system problems such as Crohn's disease, ulcerative colitis, or lupus
- have received an organ or tissue transplant, including corneal transplant
- have received or plan to receive a stem cell transplant that uses donor stem cells (allogeneic)
- have received radiation treatment to your chest area
- have a condition that affects your nervous system, such as myasthenia gravis or Guillain-Barré syndrome
- are pregnant or plan to become pregnant. TEVIMBRA can harm your unborn baby.
Females who are able to become pregnant:
 - Your healthcare provider will do a pregnancy test before you start treatment with TEVIMBRA.
 - You should use an effective method of birth control during your treatment and for 4 months after your last dose of TEVIMBRA. Talk to your healthcare provider about birth control methods that you can use during this time.
 - Tell your healthcare provider right away if you become pregnant or think you may be pregnant during treatment with TEVIMBRA.
- are breastfeeding or plan to breastfeed. It is not known if TEVIMBRA passes into your breast milk. Do not breastfeed during treatment with TEVIMBRA and for 4 months after your last dose of TEVIMBRA.

Tell your healthcare provider about all the medicines you take, including prescription and over-the-counter medicines, vitamins, and herbal supplements.

Please read the accompanying [Medication Guide](#) for TEVIMBRA and discuss it with your doctor. The physician [Prescribing Information](#) also is available.

Visit [TEVIMBRA.com](https://www.tevimbra.com) to learn more

Important Safety Information (cont'd)

What are the possible side effects of TEVIMBRA?

TEVIMBRA may cause serious side effects. See “What is the most important information I should know about TEVIMBRA?”

The most common side effects of TEVIMBRA in combination with platinum and fluoropyrimidine-based chemotherapy include: nausea; tiredness; decreased appetite; decreased red blood cell count (anemia); numbness, pain, tingling or burning in your hands or feet; decreased platelet count; decreased white blood cell counts; increase in certain liver blood tests; stomach area (abdominal) pain; decreased weight; and fever.

These are not all the possible side effects of TEVIMBRA. Talk to your health care provider for medical advice about side effects.

You are encouraged to report negative side effects of prescription drugs to the FDA. Visit www.fda.gov/medwatch or call 1-800-FDA-1088.

Please read the accompanying [Medication Guide](#) for TEVIMBRA and discuss it with your doctor. The physician [Prescribing Information](#) also is available.


TEVIMBRA[®]
(tislelizumab-jsgr)
Injection, for intravenous use 10 mg/mL



Actor portrayal.

TEVIMBRA and BeiGene are registered trademarks owned by BeiGene, Ltd. or its affiliates.
© BeiGene, Ltd. 2025 All Rights Reserved. 1124-TEV-PRC-074 03/25